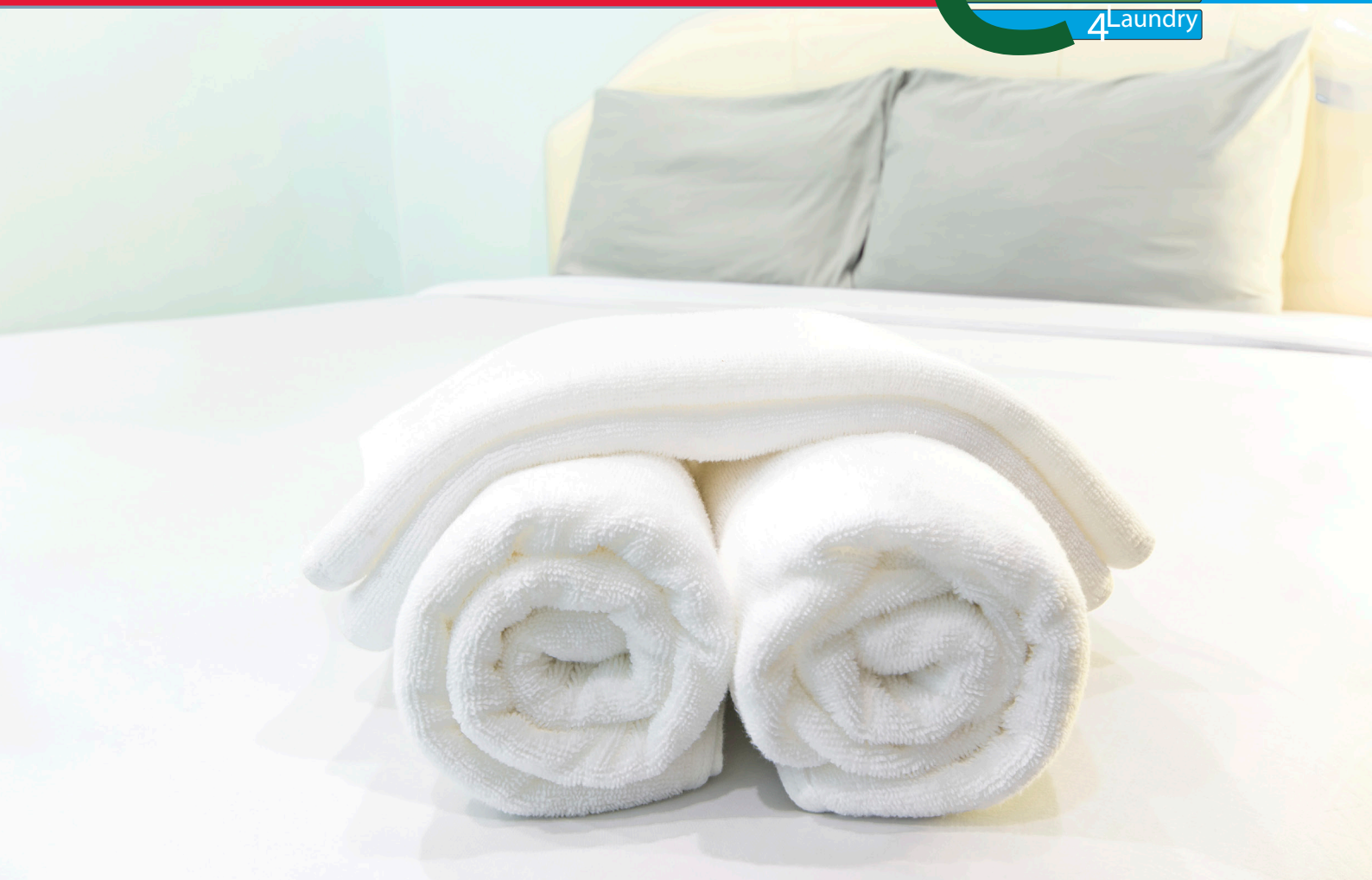


TUMBLE DRYERS



ES SERIES 10-14-18-23-34-55-75 Kg
ES SERIES GREEN 10-14-18 Kg

 **imesa**



ES SERIES

TUMBLE DRYERS 10-34 Kg

PERFORMANCES
SAVINGS
INNOVATIONS

The IMESA tumble dryer ES Series is the drying solution for all the industrial activities and communities where high productivity and excellent results are required.

MAXIMUM FUNCTIONALITY

NEW DOOR GLASS, with double glass to reduce heat dispersion and increase efficiency.

NEW TRANSMISSION, reduced vibration, lower noise, higher reliability, fewer adjustments

NEW DOOR GLASS, wider for the 23-34 Kg models to facilitate load and unload activities.

NEW FILTER, higher filtering power (+40%), shatter-proof, better ergonomics, easily dismountable

NEW CLOSING HINGES for a stronger solidity

Residual Humidity control (processor controlled) and reversing drum for a perfect drying.

NEW CLOSING SYSTEM realized with double covered magnet

Programmable anti-wrinkle function



ES 10-14-18



ES 23-34

HEATING SYSTEMS

ELECTRIC

Thanks to the optional power level system, the IMESA tumble dryers can work at full or reduced power, thus reducing costs.

STEAM

Thanks to the damper system, the heat power is immediately available. That system avoid ram strikes typical of on valve operated circuit system.

GAS

IMESA's Tumble dryers are studied to work with all gas types and are equipped with flame control and with electronic ignition plug.



STANDARD CHARACTERISTICS:

- Reversing drum
- Colored touch screen computer IM10
- USB Entrance
- Multistep heating function
- Air convection system for a perfect drying and lower costs
- Cool-down system and anti-wrinkle function

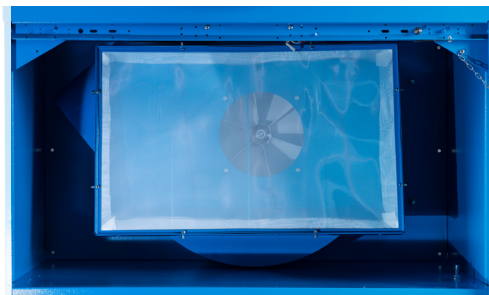


New Transmission

The new transmission is realized using POLI V belts .

ADVANTAGES:

- Reduced vibrations
- Lower noise
- Resistance
- Higher reliability
- Less adjustments required



New Filter

Lint removal 40% higher.

Filter ergonomics has been improved and its frameworks is shatter-proof.

UPON DEMAND:

- GSM Module
- Drum Speed control (DSC)
- Fun Speed control (FSC)
- Left wise door opening
- Front panels made of stainless steel
- Power split (available only on electrical heated Tumble Dryers)
- Knife switch on the back
- Voltage stabilizer

UPON DEMAND FOR ES SS SERIES - for coin operated laundries

- Mechanical and Electronic coin box
- Cashless payment system with pre-paid keys
- Connection to central cash
- Possibility to show on the tumble dryer display advertising messages

Data Sheet	u.M.	ES 10	ES 14	ES 18	ES 23	ES 34
Drum dimensions	Ø x P mm	756 x 420	756 x 585	756 x 767	977 x 590	977 x 870
Drum volume	lt	190	271	354	452	672
Drying cycles	r.p.m.	38	38	38	38	38
Exhaust flow	m ³ /h	1200	1200	1200	1680	1680
Exhaust duct diameter	Ø	150	150	150	200	200
Machine dimensions (WxDxH)	mm	791 x 707 x 1804	791 x 874 x 1804	791 x 1051 x 1804	1022 x 918 x 1932	1022 x 1188 x 1932
Net weight	Kg	203 / 201 / 207	217 / 215 / 221	233 / 230 / 234	286 / 287 / 290	323 / 321 / 323
Packaging dimensions (WxDxH)	mm	840 x 740 x 1926	840 x 890 x 1926	840 x 1070 x 1926	1060 x 950 x 1974	1060 x 1220 x 1974
Gross weight	Kg	210 / 208 / 214	225 / 223 / 229	245 / 242 / 246	298 / 300 / 303	341 / 339 / 341
Installed power	kW	18,7	18,7	24,7	25,1	37,1
Steam consumption	Kg/h	43	50	55	66	82
Gas power	kW	29,4	29,4	29,4	37,8	50,4

ES SERIES

TUMBLE DRYERS 55-75 Kg

The tumble dryers ES Series 55 – 75 Kg are the perfect solution for a medium-high productivity.

MAXIMUM FUNCTIONALITY

Homogeneity in the air flow and in the temperature inside the drum

Big door glass with a 180° overture to ease the linen loading and unloading

Programmable anti-wrinkle function

Extractable lint filter to facilitate cleaning operations

Drum made of stainless steel, without sharp edges to protect garments

Reversing drum standard in all machines

Drum speed control : rotation time and speed can be modified at any time

In house developed software, unlimited number of programs that can be tailored based according to user's needs



HEATING SYSTEMS

ELECTRIC

Thanks to the optional power level system, the IMESA's tumble dryers can work at full or reduced power, thus reducing costs.

STEAM

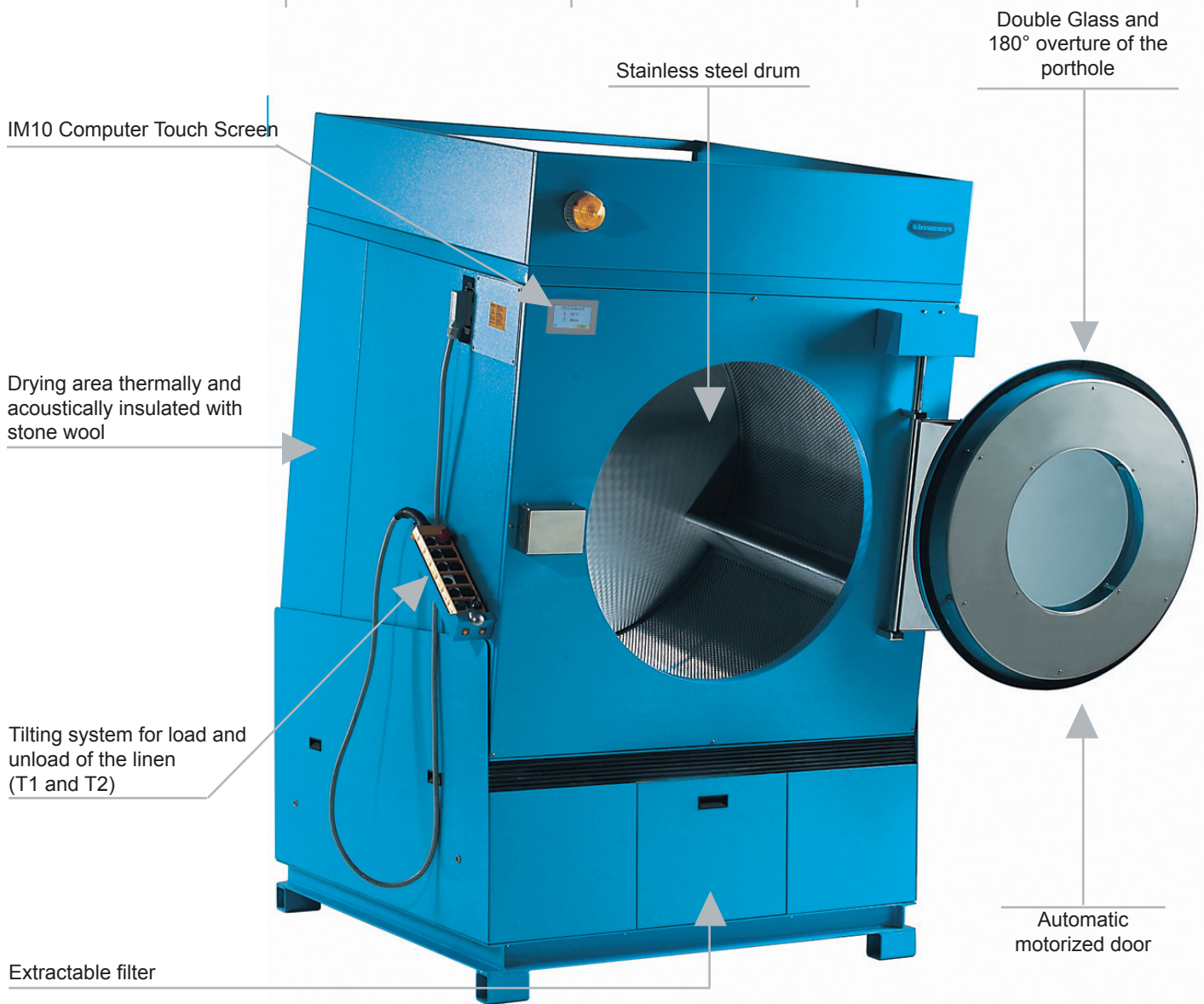
Thanks to the damper system, steam heat power is immediately available. That system avoids ram strikes typical of valve operated circuit system.

GAS

IMESA's Tumble dryers are studied to work with all gas types and are equipped with flame control and with electronic ignition plug.

OIL

Thanks to the damper system, steam heat power is immediately available. That system avoids ram strikes typical of valve operated circuit system.



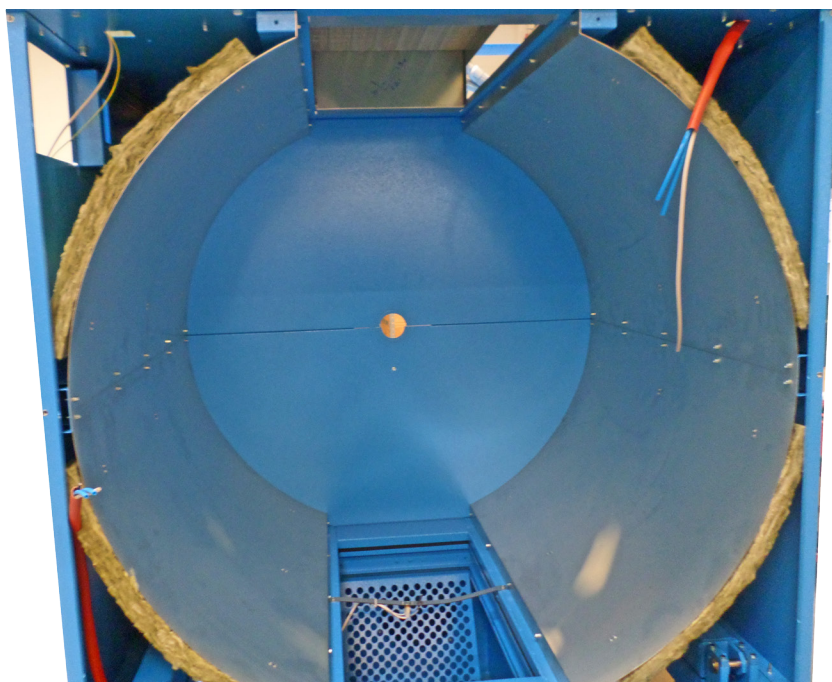
MAXIMUM SAVINGS

- Double glassed door glass for an optimal thermal insulation and consequently energy savings
- Humidity and air flow control
- Multistep function: heating and cool-down phases with different temperature levels. Garments and textiles will not be ruined by high temperature surges
- Power control system: it allows the machine to work on different heating power levels. The operator can program different power levels inside the same drying cycle

STANDARD CHARACTERISTICS:

- Colored Touch Screen Computer IM10
- USB Entrance
- Drum speed control, time and speed can be modified at any time
- Homogeneity in the air flow and in the temperature inside the drum
- Multistep heating function
- Air convection system for a perfect drying and lower costs
- Cool-down system and anti-wrinkle function
- Drum made of stainless steel AISI 304

Drying area thermally and acoustically insulated with stone wool



UPON DEMAND:

- FSC Fan Speed Control (Not available on Gas heated tumble dryers)
- Split power (Available only on Electric tumble dryers)
- Knife switch on the back
- Lint filter made of stainless steel
- GSM Module
- Central frontal in stainless steel AISI 304
- Steam damper system
- Steam heated exchanger made of stainless steel
- Fire escape system

Data Sheet	u.M.	ES 55	ES 55 T1	ES 55 T2	ES 75	ES 75 T1	ES 75 T2
Drum dimensions	Ø x P mm	1202 x 960	1202 x 960	1202 x 960	1202 x 1310	1202 x 1310	1202 x 1310
Drum volume	lt.	1088	1088	1088	1486	1486	1486
Drying cycles	r.p.m.	25	25	25	25	25	25
Exhaust flow	m ³ /h	1980	1980	1980	1980	1980	1980
Exhaust duct diameter	Ø	300	300	300	300	300	300
Machine dimen.(WxDxH)	mm	1360x1700x2260	1360x1996x2516	1360x2243x2516	1360x1930x2260	1360x2159x2516	1360x2451x2516
Net weight	Kg	813 / 829 / 822	821 / 837 / 830	828 / 844 / 837	1135 / 1156 / 1147	1143 / 1164 / 1155	1150 / 1171 / 1162
Packaging dimen. (WxDxH)	mm	1540x1700x2422	1540x1700x2422	1540x1700x2422	1540x2050x2422	1540x2050x2422	1540x2050x2422
Gross weight	Kg	882 / 898 / 891	889 / 905 / 898	897 / 913 / 906	1199 / 1220 / 1211	1206 / 1227 / 1218	1214 / 1235 / 1226
Electric machine power	kW	60,7	60,7	60,7	100,5	100,5	100,5
Steam consumption (10 bar)	Kg/h	93	93	93	114	114	114
Gas power	kW	95	95	95	115	115	115

ES GREEN SERIES

ESSICCATOI 10-14-18 Kg

with heat pump

The ELECTRIC HEATED tumble dryer ES GREEN with HEAT PUMP works with a closed circuit, without external exhaust. It can be installed also in closed rooms.

HOW IT WORKS

- **CLOSED CIRCUIT SYSTEM:** it does not need exhaust duct
- The air is heated by a **small group of heaters** and circulate inside the drum where it captures the humidity
- **THE HUMIDITY IS THEN CONDENSATED** by chiller group and separated
- **THE WATER IS DRAINED** while the dry air returns back to the heaters and eventually inside the drum.



MAXIMUM FUNCTIONALITY

The absence of smoke and humid air exhaust duct permits the use of the tumble dryers also in closed spaces where it is difficult or forbidden to build exhaust

NEW DOOR GLASS with double glass

The machine is internally covered with insulation material

Double lint filter to facilitate cleaning operations

Machine equipped with inverter to adjust the drum speed control

Machine equipped with inverter to adjust the air flow

Availability of different pre-heating heaters

STANDARD CHARACTERISTICS:

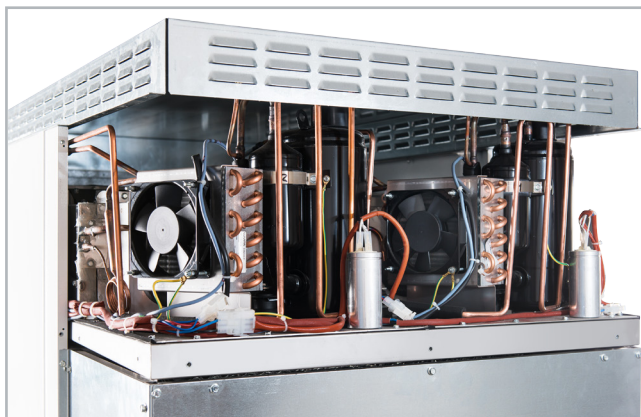
- Colored Touch Screen IM10 Computer
- USB port
- Multistep heating function
- Auto-diagnostic
- Anti-wrinkle function
- Drum Speed Control and Fun Speed Control functions



DOES NOT REQUIRE EXHAUST DUCT

MAXIMUM SAVINGS

- The power required for the correct functioning of a tumble dryer with heat pump is 1/3 compared to the power required for the functioning of a traditional tumble dryer.
- The energy consumed in a cycle is lower than the 50% consumed by a traditional tumble dryer.



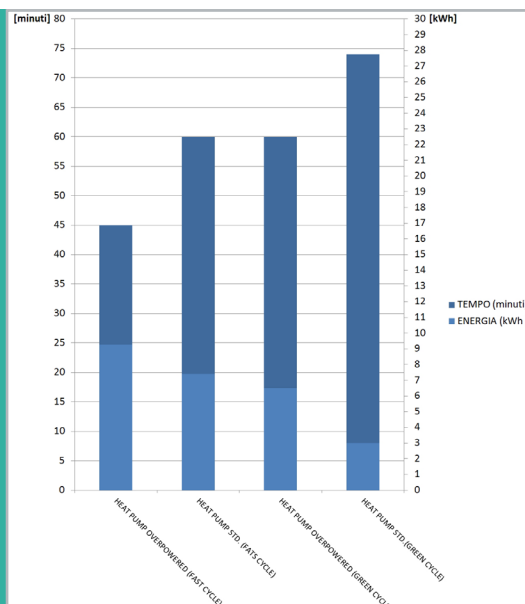
Heating Pump Group

The heating pump group is assembled on the upper part of the machine. It works with a closed circuit thus eliminating residuals and fluff dispersions in the working area.

The heating pump group is a low energy consumption system.

The graph shows the increase in drying time, the reduction in power used and energy consumed. IMESA offers solutions with different powers for optimal performances in function of the time and electric power available.

- **LONGER TIME**
- **LESS ELECTRIC POWER CONSUMPTION**
- **HIGHER ENERGY SAVINGS**
- **HIGHER ELECTRIC POWER**
- **SHORTER TIME REQUIRED**
- **MORE CYCLES PER DAY**



UPON DEMAND:

- Knife switch on the back
- Door can be opened on the left
- Emergency stop button
- GSM Module

Data Sheet	u.M.	ES 10 Green	ES 14 Green	ES 18 Green
Drum dimensions	Ø x P mm	756 x 420	756 x 585	756 x 767
Drum volume	lt.	190	271	354
Drying cycles	r.p.m.	38 Standard adjustable by inverter		
Exhaust flow	Ø mm	34	34	34
Machine dimensions (WxDxH)	mm	791 x 1111 x 1846	791 x 1278 x 1846	791 x 1445 x 1846
Net weight	Kg	317	337	352
Packaging dimensions (WxDxH)	mm	840 x 1450 x 1980	840 x 1450 x 1980	840 x 1450 x 1980
Gross weight	Kg	328	348	368
Standard power	kW	6,85	6,85	6,85
Fast version power	kW	8,35	8,35	8,35

Touch our world

IM10

- Unlimited number of programs, 10 of them are pre-set and modifiable
- Easy program selection
- Working Parameters can be modified during the cycle
- Possibility to choose pictures to show on the high resolution display
- Possibility to link to each program to an icon coming from the database or personalized
- Eye-level positioned, comfortable and ergonomics

USB PORT

Using a standard USB key it is possible to connect the IM10 with the outside world to:

- Upload/download programs and transfer them from a machine to another
- Upload Screensaver and Program identification symbols
- Upload configuration preset to ease the spare parts substitution
- Upload/download files .doc .pdf that cannot be visualized using IM10 display
- Download data about completed washing cycles (maximum 5000)



WIZARD

It is the free computer software that enables to:

- Create, copy and paste also in remote complex programs
- Download programs on different external memory devices
- Send and share programs by mail
- Share your programs on the web. IMESA's set are available on company's website. They can be downloaded using Wizard and uploaded into the machines using the USB entrance.

MICRO SD MEMORY SLOT

IM10 disposes of a 4GB Micro SD memory card, in which all pictures, preset data and programs uploaded into the machine using the USB are saved. The SD is removable and can be used also on other devices.

The POWER CONTROL function allows the machine to work with different heating levels; the operator chooses if making it work at the minimum or maximum based on the power available.

It is possible to monitor the energy consumption via the display. The loads and entrances tests can be executed via the keyboard.

PROGRAM MODIFICATION POSSIBILITIES

The drying cycle varies according to the residual humidity level, duration. Temperature, drum speed, fan speed, anti-wrinkle parameters, cool-down length.

All programs can be modified, saved and then started. The control humidity programs stop automatically when the pre-set humidity level is reached. This implies time saving, better results avoiding garments and textiles damages caused by wrong parameters set by the operator.

GSM: Remote connection between machine and Imesa after-sales center

- 24 months guarantee starting from the date of registration of the machine at IMESA's Service Center
- IMESA's Services Center is available 24/7, it communicates with the distributor via SMS to deliver a real-time diagnostic and via e-mail to inform about a breakdown and how to recover it.
- Possibility to monitor the machine and remote printing:
 - Program executed – Machine status – On going programs – Reset meters - Breakdown check ups
- Monitor detergent consumption
- The GSM service is completely free of charge and it is available worldwide
- The prompt intervention and the possibility to provide remote assistance in real time reduce maintenance costs and minimize productivity losses



Only IMESA offers a **24 MONTHS FULL GUARANTEE.**



CE CERTIFICATION

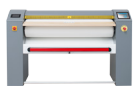
IMESA's washing machines are manufactured in conformity with the European Community products standards.



EAC CERTIFICATION

IMESA's washing machines are manufactured in conformity with the custom unions standards.

a life by your side



IMESA S.p.A Via degli Olmi, 22 - 31040 Cessalto (TV) ITALIA ☎ + 39 0421 468011 📠 +39 0421 468000 ✉ info@imesa.it - www.imesa.it



IMESA



SECTORS OF APPLICATION
IMESA'S RANGE OF PRODUCTS